

Product Name: *GanoUltra*TM– Multi-Reishi Blend

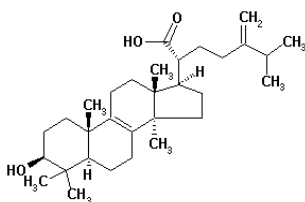
ITEM	SPECIFICATION	TEST METHOD
Identification	Match NIH - NCBI Genebank data	Genetic Testing through DNA BLAST
Purity Tests		
Total Plate Count:	< 10,000 cfu / gram	Heavy Metals analyzed by a Perkin-Elmer HPLC apparatus using the technique called TotalQuant II
Yeast and Mold:	< 100 cfu / gram	
Total Coliform Bacteria:	< 30 cfu / gram	Polysaccharides analyzed by modified Megazyme test method for 1,3-1,6 beta glucans and other polysaccharides
E. coli	< 3 cfu / gram	
Salmonella:	Negative	
Heavy Metals:	< 10 ppm	Other tests performed as Standard methods of analysis for Hygienic Chemists
Total Polysaccharide Content:	> 30 %	
Loss on Drying	not more than 7.0 %	10 grams 105 degrees C for 1 hr
Ash	Not more than 1.0 %	Standard methods of analysis for Hygienic Chemists
Appearance	Granular or fine powder, beige in color	Visual
Odor	Characteristics	Subjective bioassay
Other Ingredients	none	-
Particle Grind Size	From nano size up to 80 mesh	As specified by customer

Typical Uses for *GanoUltra*TM

- Used alone or as a component in High-end Reishi Formulas
- Popular as an ingredient in athletic formulas
- Used in blood pressure formulas

Up until now, most Reishi came from Japan and China. Now you can source your Reishi from the Largest, Most Reliable American supplier!

If you need 1 kilogram or 100 tons, we are your stocking source!



Aloha Medicinals Inc.

2300 Arrowhead Dr.
 Carson City, NV 89706
 Tel (775) 886-6300
 Email: sales@alohamedicinals.com



100% Certified Kosher by Star K – 100% Certified Organic by QAI